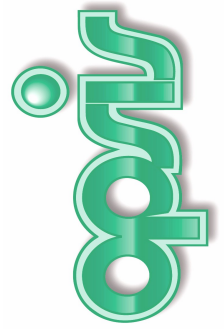


Customized testing solutions  
for all closure manufacturers



# CAPchecker®

High Speed Closure Checks  
for complete 100% ON-LINE Quality Control

**New: 3-Camera System**



## A Success Story

Since its inception in 2002, and **with over 130 systems installed world wide**, the CAPchecker® has rapidly evolved into the system of preference for closure testing. Our customers cover the whole spectrum from mid size companies to the large international corporations. It is the outstanding checking performance obtainable even at the highest testing speeds, in connection with the process reliability that has made the CAPchecker® the standard system for the closure industry.

The name Opsis is synonymous also with continuous developments in testing techniques, such as - the multiple camera evaluation, the comfortable maintenance via modem and continuously accessible production data. The CAPchecker® makes quality control predictable and reliable. The CAPchecker® thus is a proven and integral part of the successful Vision Checker series for a complete and 100% quality assurance in the container and closure production.

- CAPchecker® Closure inspection inside / outside
- PADchecker® Testing prints on closures

- PETchecker Seal tests on PET bottles
- CANchecker Testing cans and tops

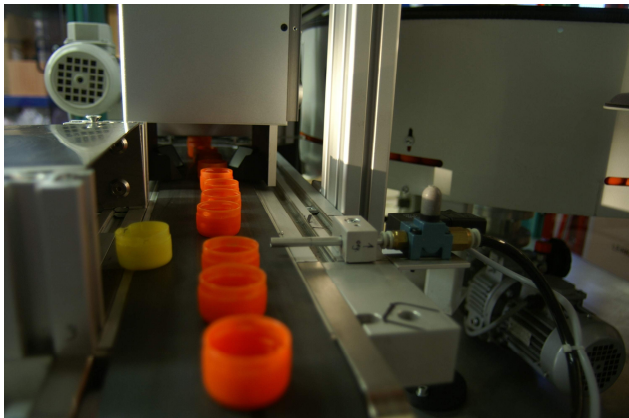
# CAPchecker® - quality around the closure

## The CAPchecker® family

- CAPchecker® BASE with color camera
- CAPchecker® PLUS for easy flash detections
- CAPchecker® AROUND and
- CAPchecker® 4 M for all- around test
- PADchecker® for print inspection
- CAPchecker® 3D complete test of all areas



CAPchecker 2Camera system in line



High speed vision test

## Data

- Type of closures:** Plastic, Aluminum, Crown Corks. Single and multiple as well as all types of custom tailored closures.
- Colors:** all common closure colors, also bright white and black
- Inspection speed:** up to 3200/min
- Camera-Type:** depending on specs, black and white or color cameras, up to 4 per System.

## The Highlights

- Critical inside checks of plastic and metal closures, such as: surface seals, mold and liner inspection and thread test
- Dynamic match-up of shape of test surface
- Checking for seal voids
- Testing of temper evident band from outside view
- Contamination (color spots, burned material)
- Inspection of Outer Casing Surface with CAPchecker® AROUND or 4M.
- Recognition of even minute color drifts
- Remote diagnostics and maintenance
- Data transmission to Host via Ethernet
- Most extensive test functions world wide
- Integrated ejection control, PLC not required
- Test cycle up to 3.200 pcs/ min
- As an ideal option we recommend the PADchecker® for printed image inspection with Color Camera

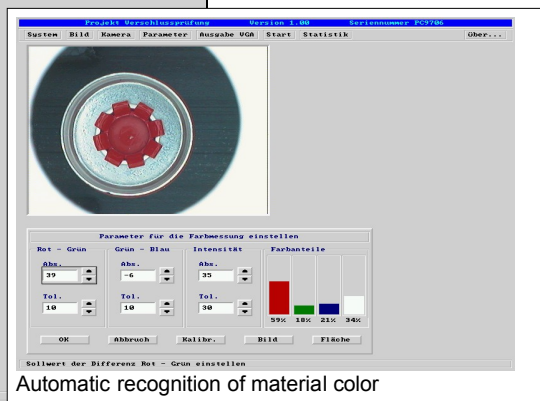
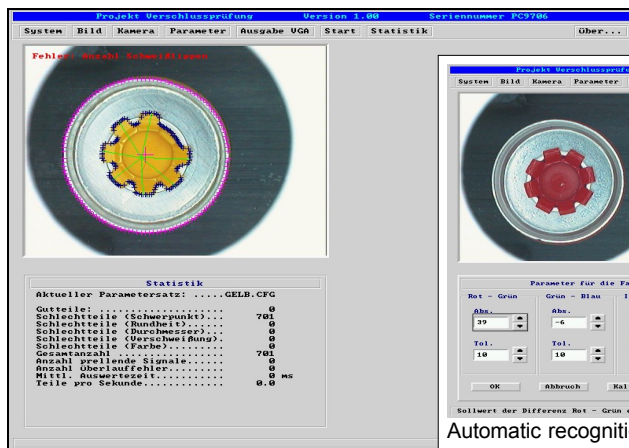
## Complete and Integrated Systems

With the **CAPmaster CMC / HS** we supply a compact and complete feed and inspection machine.

The **CAPorientor COR / HS** represents a conveyor system for connection to the cooling belt or to a hopper.

For integration, into assembly lines for multiple part closures, we supply the conveyor belt system.

**CAPconveyor CCV / HS** with an integrated 1- 2- or up to 4- Camera-CAPchecker®



Automatic recognition of material color

Screen display of closure inspection with 20 parts /s for the pharmaceutical industry. Inspected are among others – the roundness of the AL-container, crown formation on the AL-ledge, missing or damaged weld seams and the material color.